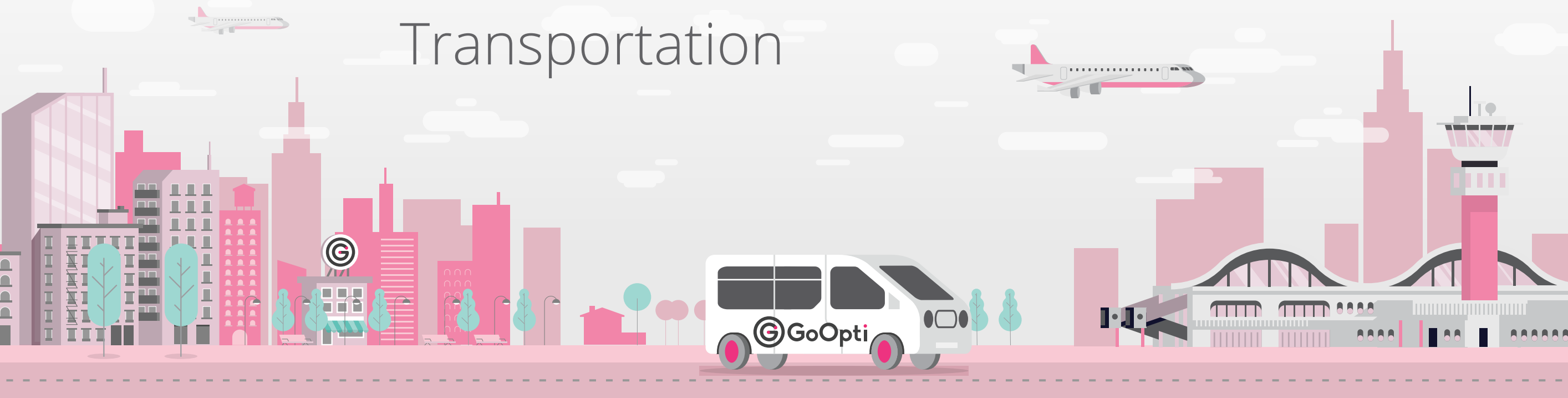
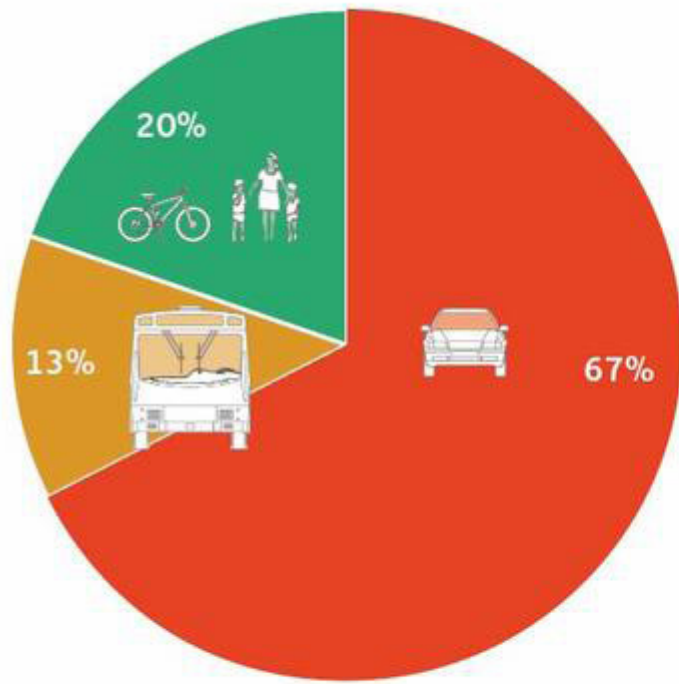


Dynamic Shuttle Platform

First and Last Mile Inclusive
Transportation



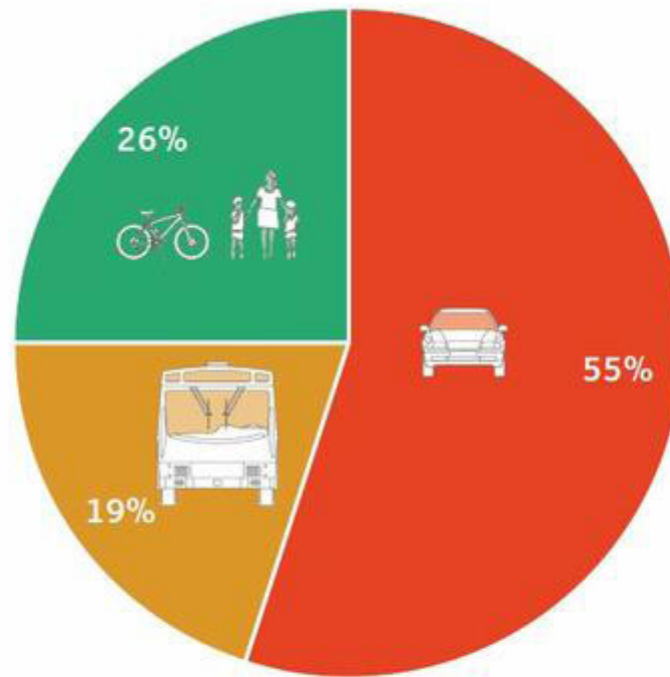
Ljubljana City Mobility Strategy from 2012



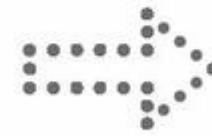
2011*



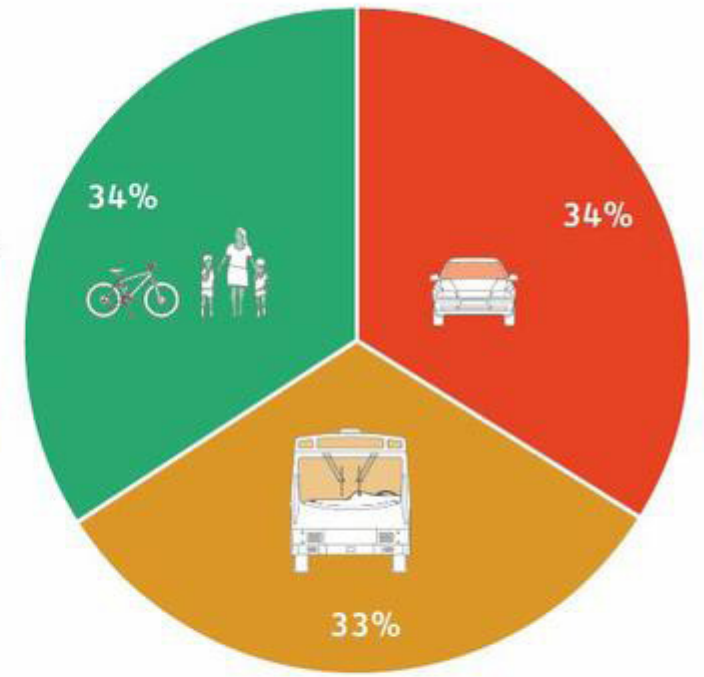
UKREPI
DO
2015



2015



UKREPI
DO
2020



~~2020~~
2027 ?

How to actually speed up the process?



Convenience and affordability are the two most important deciding factors according to our indepth survey of 4,000 customers.

Public Transportation VS Private Car

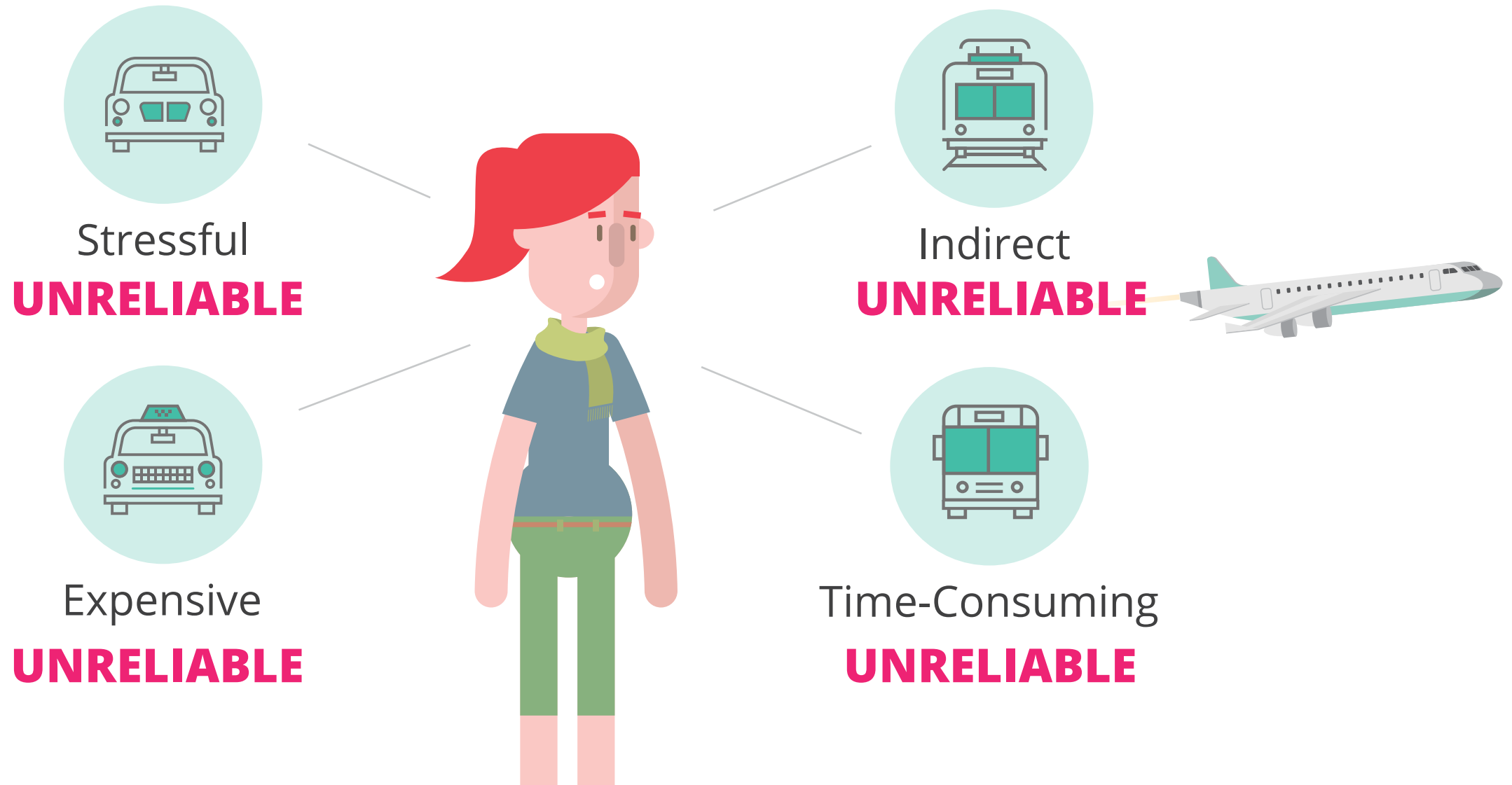
Need to be better or equal as personal car

Price

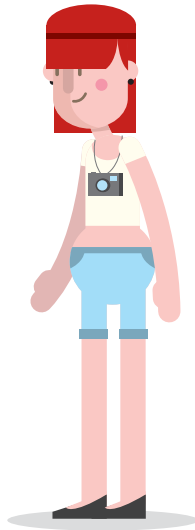
Convenience

Reliability
Frequency
Door2door
User Experience

GoOpti made it on **longer distances to airports.**



Creating **opportunities** & providing **reliability**



Passengers

1,7M transported passengers

GoOpti platform

- Web and mobile app
- **Dynamic pricing and pooling**
- Routing
- **Risk management**
- **Alternative offers**



Shuttle companies

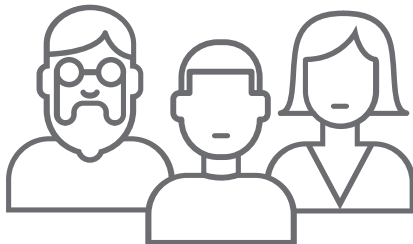
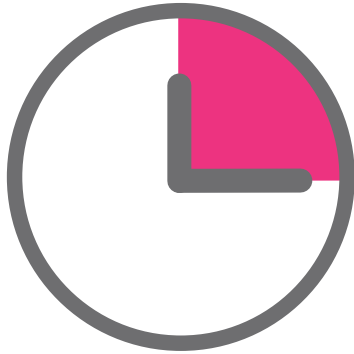
18 franchises

What kind of services we offer?

Shared (flexible & fixed timing), private and custom.

Transfer type:
SHARED

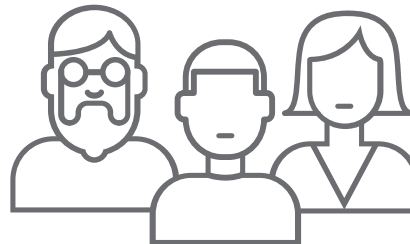
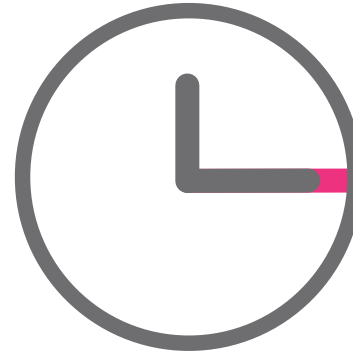
Departure time: **Flexible**



SHUTTLE

Transfer type:
SHARED

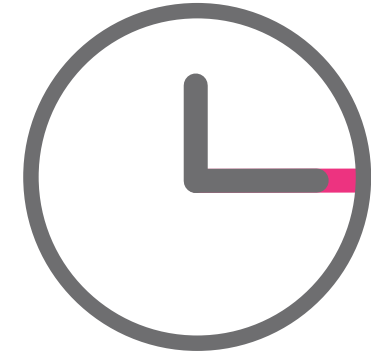
Departure time: **Fixed**



SHUTTLE / BUS

Transfer type:
PRIVATE

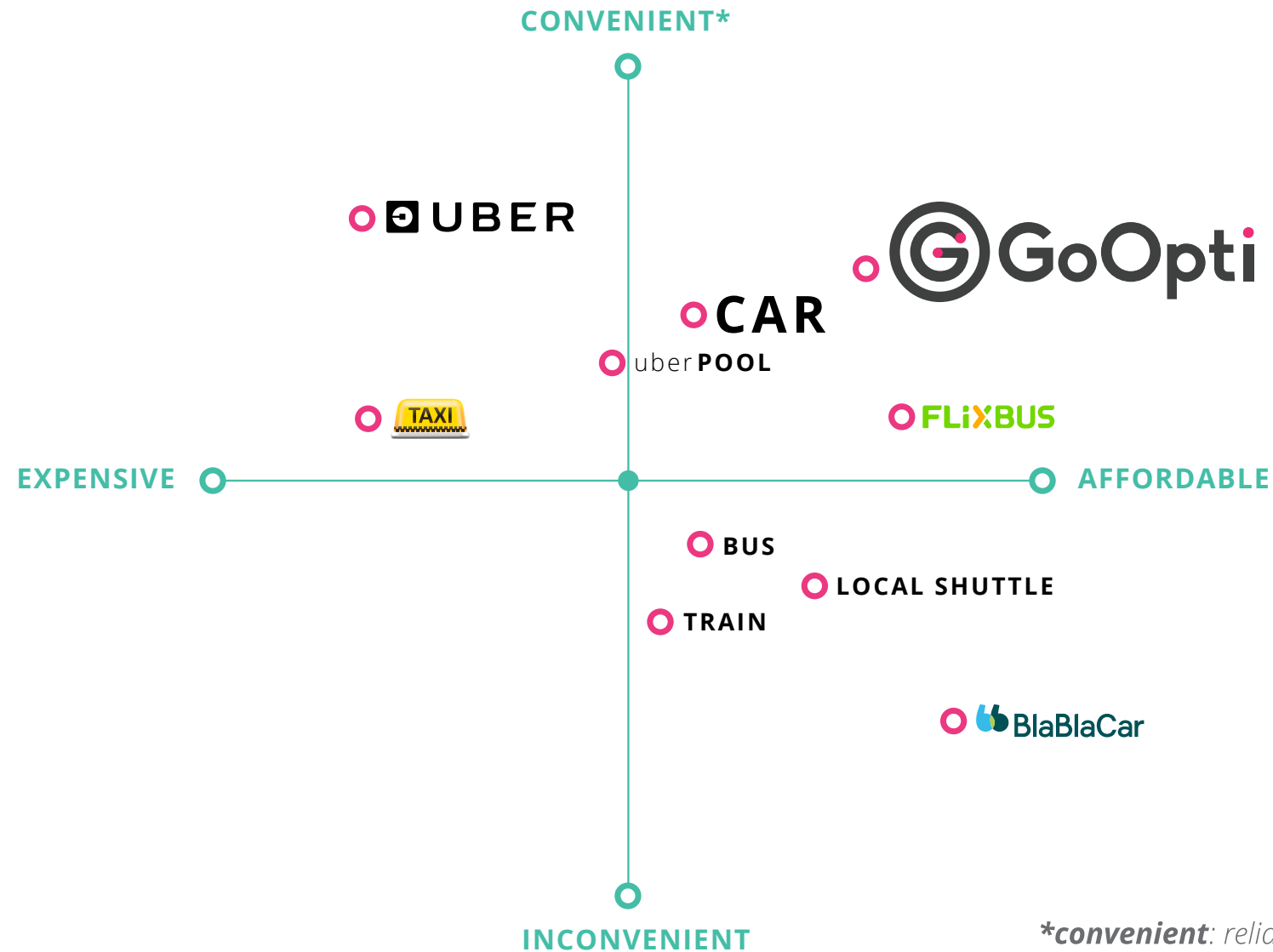
Departure time: **Fixed**



TAXI

No competitors, **only complementors**

LONG DISTANCE (50+ km)
CITY TO AIRPORT

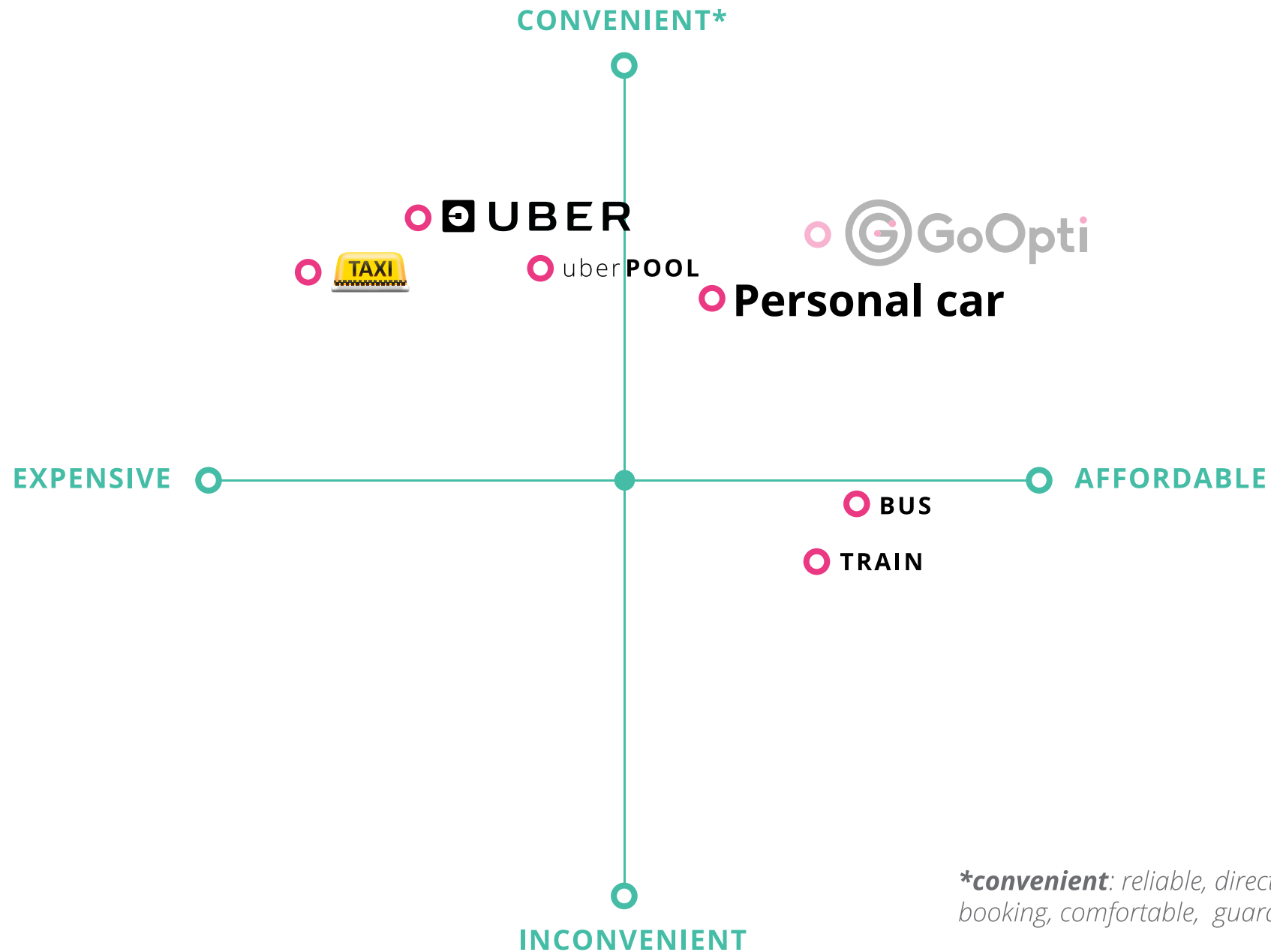


76 % of our clients would otherwise travel by car.

**convenient: reliable, direct, flexible in time, online booking, comfortable, guaranteed, door-to-door*

No competitors, **only complementors**

SHORT DISTANCE
WITHIN CITY
RURAL 2 URBAN



**convenient: reliable, direct, flexible in time, online booking, comfortable, guaranteed, door-to-door*

✉ marko@GoOpti.com

📞 [marko.gucek](https://www.linkedin.com/company/marko-gucek)

Thank you.

